

ACCESS AUDIT OF A SPORTS CENTER

By: Sherihan Akkawi and Ramez Maadad

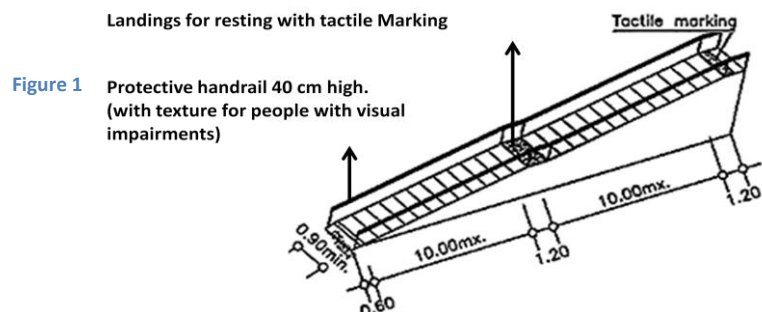
1. Plan and Distribution of Services



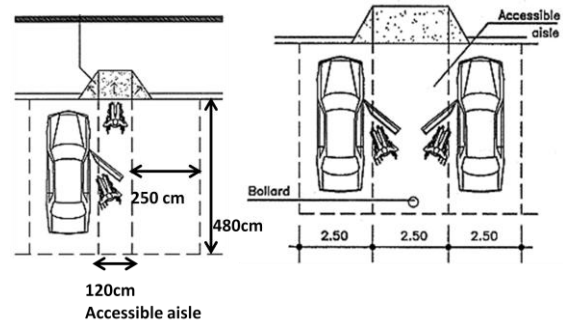
- Photo on the left shows the mass plan of the sports center from an elevated perspective. The picture also portrays the parking, gym, circulation, pool & cafeteria areas.
- Photo on the right shows the stairs leading to the pool & football field area. *No ramps are installed.*

2. Outdoor stairs leading to the pool area

Problems Found	Suggested Solutions
1-Inaccessible routes for people with: <i>Mobility disabilities wheelchairs & carriages due to the lack of ramps.</i>	<ul style="list-style-type: none"> • Provide a ramp with landings for resting. (Fig 1) • Landings should be provided every 10.00 m. (Fig.1) • A protective handrail at least 40 cm high must be placed along the full length of the ramp.(Fig.1)
2-Inaccessible routes for people with: <i>Vision Impairments.</i>	<ul style="list-style-type: none"> • A colored textural indication (Tactile Marking) at the top and bottom of the ramp should be placed to alert sightless people as to the location of the ramp. (Fig.1)



3. Parking



Problems Found	Suggested Solutions
1- Lack of Accessible aisle for people to place their wheelchairs.	<ul style="list-style-type: none"> Provide an access aisle 1.20 m wide located between two ordinary parking spaces as shown in the figure above. Place Bollards in Accessible aisle areas to prevent cars to enter the area.
2- Lack of signage to indicate parking for disabled people next to the entrance of the gym. (Fig.7)	<ul style="list-style-type: none"> Accessible parking spaces with appropriate signage should be located not more than 50 m from accessible building entrance. (Fig.2 & 3)
3- Lack of loading zones	<ul style="list-style-type: none"> Provide loading zone (120 cm length) (Fig.3)
4-No marking to indicate transition to a vehicular area between the parking and main entrance area for people with vision impairments.	<ul style="list-style-type: none"> Introduce a tactile marking strip at least 0.60 m wide can be constructed at the edge of the pathway to warn of the transition to a vehicular area.
5- Lack of curbed ramps for people with wheelchairs and carriages.	<ul style="list-style-type: none"> Construct a curbed ramp between the accessible parking & the main entrance area. (Fig.4)



Figure 2

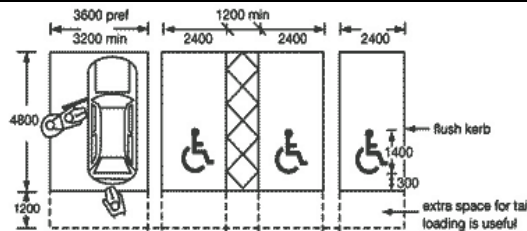


Figure 3

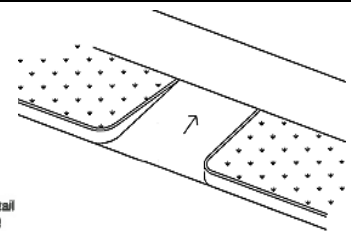


Figure 4

4. Main Entrance

Problems Found	Suggested Solutions
1- The door is hard to push. (Fig 4)	<ul style="list-style-type: none"> Substitute door with an automatic sliding one (Fig.6) or use a handle from (Fig. 7)
2- The glass door is highly reflective and can be annoying or confusing for people with vision impairments or dyslexia.	<ul style="list-style-type: none"> Change material of the door to make it less reflective.(Fig 4)
3- Presence of a mat at the Door Entrance.	<ul style="list-style-type: none"> Door mats should be avoided. When used however, the upper surface of the mat should be level with the floor finish



Figure 4

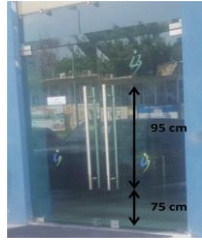


Figure 5



Figure 6

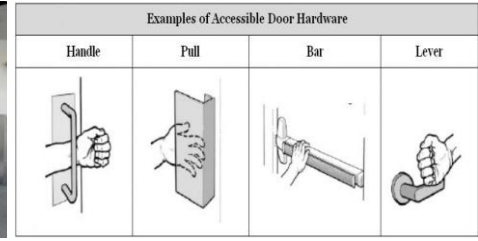


Figure 7

❖ **Main Entrance Advantage:**

- I. There is contrast between the floor and the entrance elevation for people with visual impairments.
- II. The door handle height is accessible & reachable for people with different heights including children. (Fig 5)

5. Reception

Problems Found	Suggested Solutions
1- The Floor tiling is patterned and has different colors. (Fig. 8)	<ul style="list-style-type: none"> Avoid patterned floor, use uniform floor tiles having a contrast color with the wall.
2- Reception table has 1 height (110 cm) (Fig. 8)	<ul style="list-style-type: none"> Provide a reception table with multiple height counter and knee space. (Fig 9.)



Figure 8



Figure 9

❖ **Main Reception Advantage:**

- I. The Reception table is centered and directly aligned with the main entrance door.

6. Internal Stairs Leading to the (Machines Area)

Problems Found	Suggested Solutions
1- There are no handrails on both sides of the stairs for people with mobility disabilities.	<ul style="list-style-type: none"> Handrails must be installed on both sides of the stairs and around the landing for gripping (fig. 10).
2- No Tactile marking strips on the stair landings.	<ul style="list-style-type: none"> A tactile marking strip should be placed at the top, bottom of the stairs and at intermediate landings to alert sightless people as to the location of the stairs.
3- The light coming from the window.	

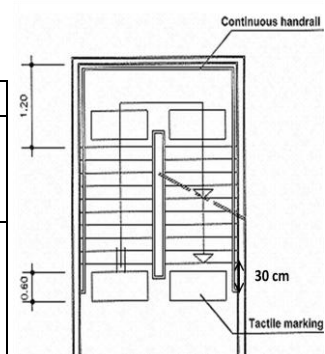


Figure 10

7. Elevator

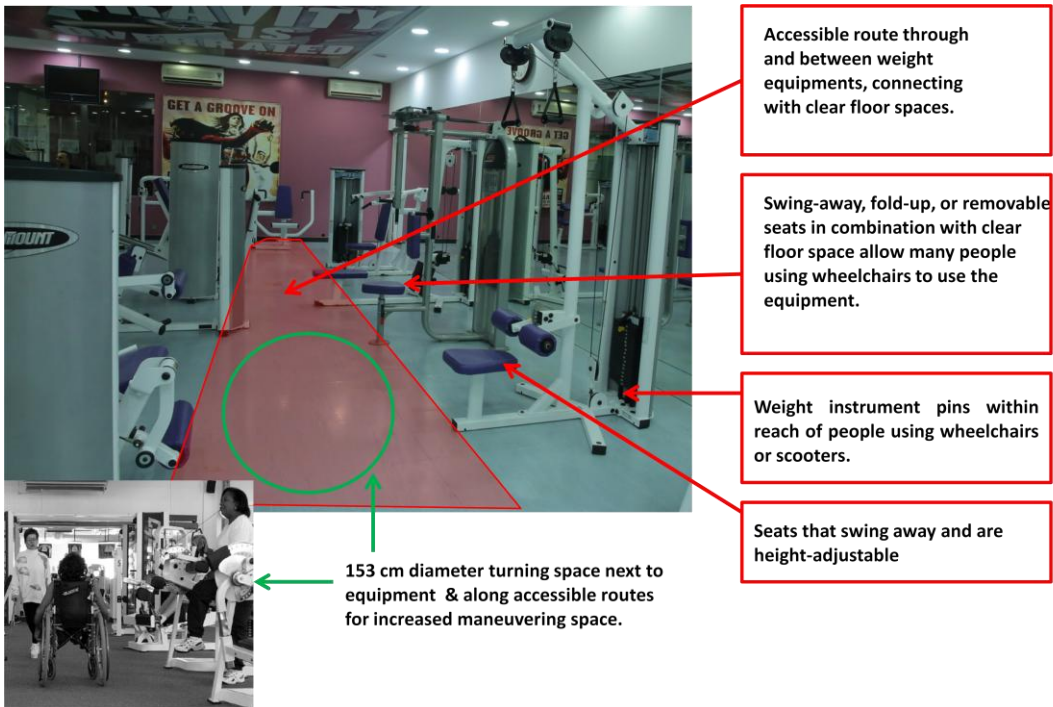
Problems Found	Suggested Solutions
1-The buttons in the elevator are not available in the Braille version for people with visual impairments.	<ul style="list-style-type: none"> Provide Braille version for the buttons in the elevator.

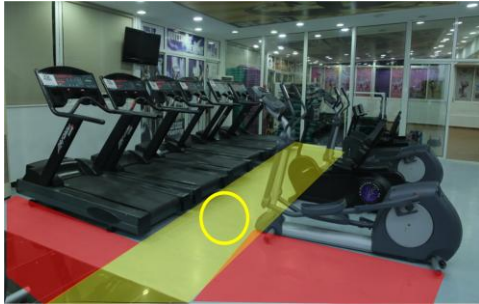


❖ Main Elevator Advantages:

- I. Elevator door is automatic sliding.
- II. There are mirrors on the 3 sides of the elevator for people with wheelchair to be able to maneuver well.
- III. There are handrails on the 3 sides of the elevator (1m height).
- IV. There is visual text that indicates arrival to the desired floor for people with hearing impairments.
- V. Dimension of the elevator interior: 120 x 100 cm (suitable for a person with wheelchair).

8. (Machines) Training Equipment Zone





Clear floor space, which may be used for people to leave walkers, etc., while using equipment. (120 cm x 46 cm)

• Accessible routes between all rows of equipment.

• 100 cm-diameter turning space between rows of equipment / If adjusted to 120 cm it will allow people to turn around without having to go to the end of the row.

9. Locker and Entrance to Bathroom



Bench should not encroach (make it narrow) on accessible route or clear floor space.

This step at the entrance of the Changing room, bathroom, locker and shower area is dangerous for people with visual impairments and inaccessible for people with wheelchairs.

The 100 cm narrow route should be widened to allow access of more than 1 person at a time and for people with wheelchair to be able to access it.



Lockers available on various height levels suitable for people with different height reach . (137 cm max for people with wheelchair)

10. Bathroom


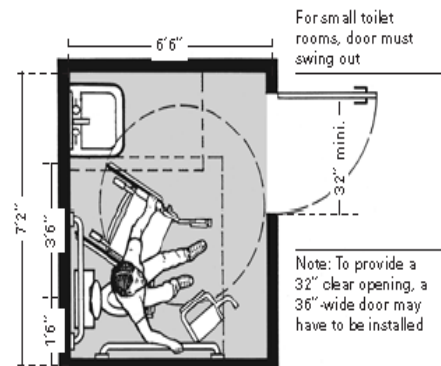
Problems Found	Suggested Solutions
1- There is no bathroom for people with disabilities.	Provide at least 1 inclusive designed bathroom for people with disabilities.
2-The toilets door swing indoors.	Toilet door should swing outdoors (easier for people with wheelchairs to enter and leave).
3-The door knob is not easy to handle.	Change the door knob using 1 of the designs below.
4- No handrails available.	
5- No washing basin available.	Provide a washing basin and handrails (70 cm high from floor).
6- Size of the bathroom is not suitable for people with wheelchairs or walkers.	



Figure 11: Bathroom design plan for people with disabilities.



11. Lavatory

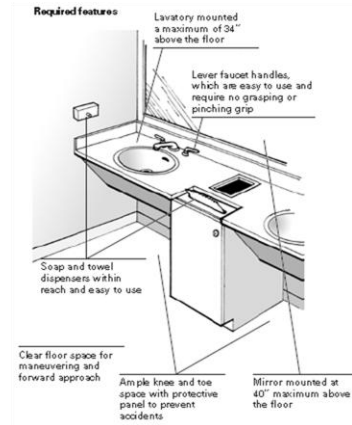


Mirror 100 cm above the floor.

Soap ,towel dispensers and hairdryer within reach and easy to use. (140 cm high from floor)

Lever faucet handles are not easy to use and require no grasping or pinching grip

Lack of knee and toe space with protective panel to prevent accidents under the lavatory.

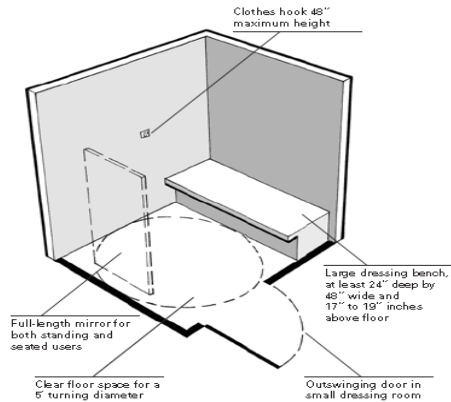


12. Shower & dressing room

Problems Found	Suggested Solutions
1-No full length mirror for standing & seated users.	Provide a mirror with the suitable measurements.
2-The door swings indoors.	Door swings outdoors.
3- No enough space for users with wheelchairs to maneuver.	Space should be 150 cm minimum & 180 cm to be comfortable.



Figure 4. Dressing Room



❖ Main Shower & Dressing Room Advantages:

- I. Large dressing bench 62 cm deep by 110 cm wide and 35 cm above the floor.
- II. Cloth hook is 120 cm high from floor.

13. Indoor Pool Area

- The Reflective tiles will cause confusion in people with visual impairments and dyslexia.

14. Outdoor Pool Area

- No installed Slope for the wheelchair users to enter the pool. (Possible solutions on next page)

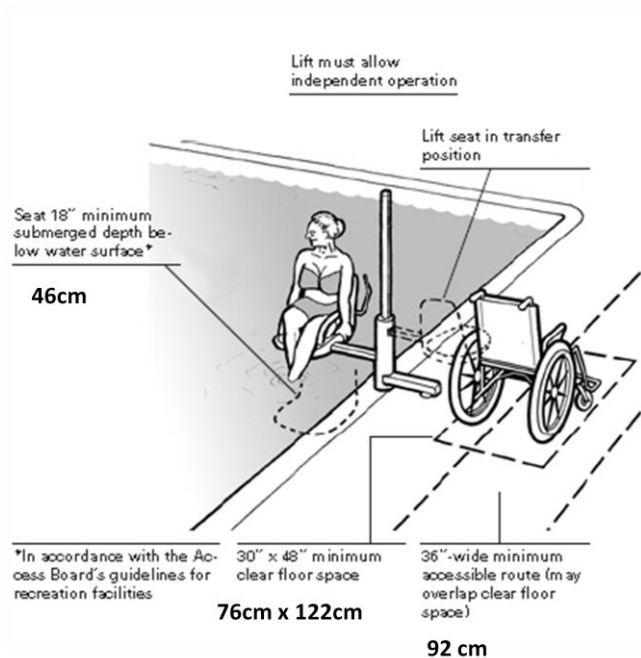


Figure 15. Transfer Wall

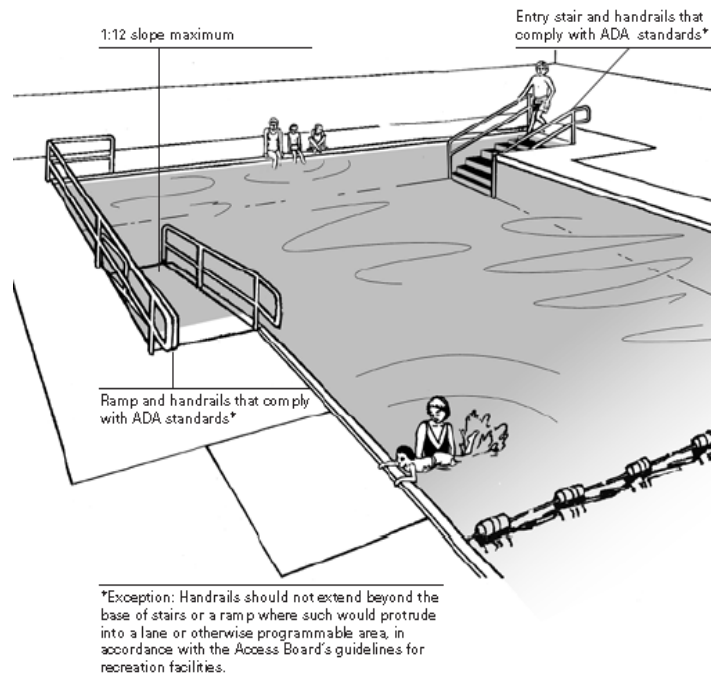
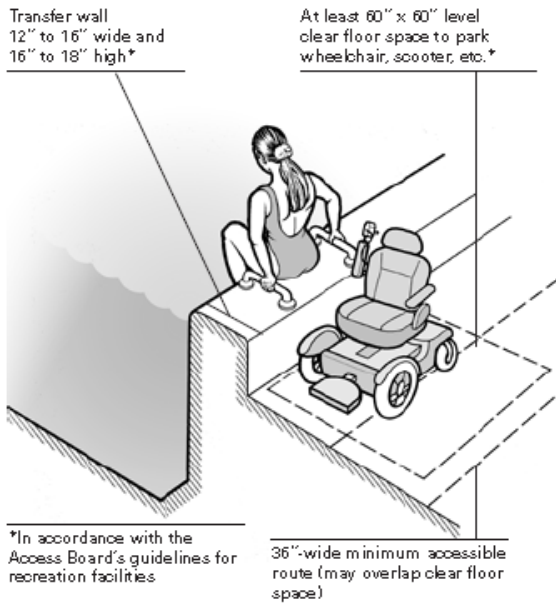


Figure 16. Transfer System (lift or transfer system easiest to install in existing facility)

